



Borough of Chambersburg

*A full service municipality in Franklin County
celebrating over 65 years of consumer owned natural gas service
over 100 years of community electric and a
regional wastewater, water, and municipal solid waste utility*

NOTICE OF RECEIPT

I have received the Addendum #1 for the Proposal, Specifications, and Contract for Curb Reconstruction on Borough Streets

Company

Contact Person

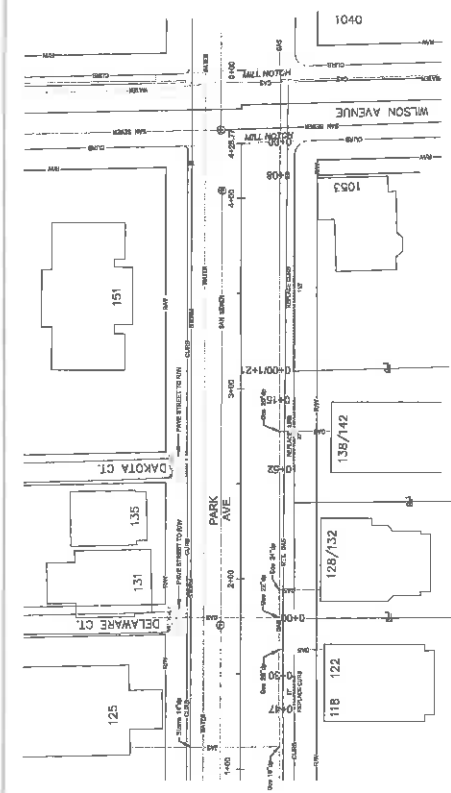
Date Received

Curb Reconstruction on Borough Streets (Addendum #1)

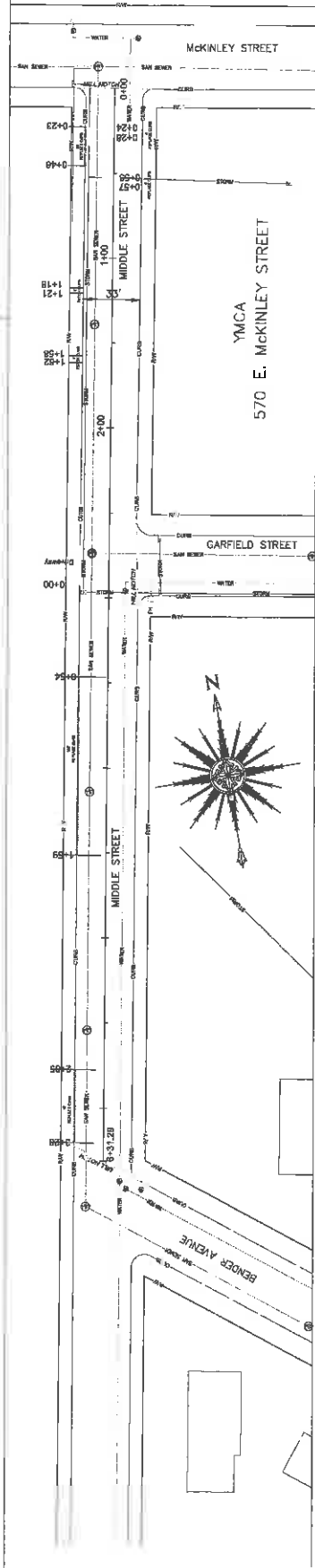
In accordance with the requirements of the "Instructions to Bidders," this Addendum shall be attached to and become a part of the Contract Documents for the above referenced project.

1. Please find enclosed a revised Curb Reconstruction Plan for Park Avenue and Middle Street (E-395).

- NOTE:
- 1) BEFORE ANY CONSTRUCTION CALL "A ONE CALL" FOR UTILITY LOCATIONS. PLS. 1-800-292-1776
 - 2) UTILITIES ARE APPROXIMATE IN LOCATIONS AND DEPTHS. CARE MUST BE TAKEN WHEN WORKING IN THESE AREAS. IF UTILITIES ARE ENCOUNTERED OR DAMAGED, CONTACT PROJECT THROUGH UTILITY AGENCY FOR REPAIR OR RELOCATION.
 - 3) FINISH ALL CURB, GUTTERS, MANHOLES AND VALVES TO GRADE AND SEAL WITH 1584-22.
 - 4) ALL JOINTS TO BE SAW CUT OR EQUIVALENT AND SEALED WITH P684-22.
 - 5) ANY DAMAGE TO PRIVATE PROPERTY, CURBS, SIDEWALKS AND PUBLIC UTILITIES IS THE CONTRACTOR'S RESPONSIBILITY.
 - 6) CONTRACTOR WILL MAINTAIN EXISTING GRADE OF ALL STREETS, ALLEYS AND DRIVEWAYS.
 - 7) ALL TRAFFIC LINES AND CROSSWALK LINES TO BE RESTORED BY THE BOROUGH.
 - 8) ALL CURBS TO BE SEALED WITH P684-22.
 - 9) ALL EXCAVATED MATERIAL CAN BE MOVED TO THE CLOSED BOROUGH LANDFILL ON WILLOW AVENUE. (BOROUGH PROJECTS ONLY)
 - 10) ANY AREAS WHERE DEPTH OF UTILITIES ARE IN QUESTION IT'S THE RESPONSIBILITY OF THE CONTRACTOR TO MAKE THE UTILITY TO VERIFY THE DEPTH OF THE UTILITY. THE CONTRACTOR'S CLIENT THAT IS DIGGING OR DAMAGED IS THE RESPONSIBILITY OF THE CONTRACTOR.
 - 11) SPECIES OF TREES MUST BE STRICTLY FOLLOWED, UNLESS OTHERWISE APPROVED BY THE BOROUGH ENGINEER.



PARK AVENUE



MIDDLE STREET

FORPULMUS & ASSOCIATES, INC.
 100 S. Second Street
 Chambersburg, Penn.
 PROJECT NUMBER: 100-1776
 PROJECT NAME: PARK AVENUE
 UTILITY LOCATIONS, SHOWN
 HEREIN ARE APPROXIMATE.

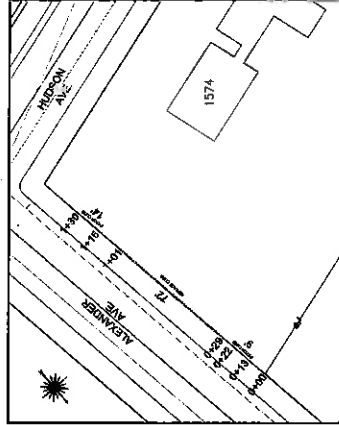
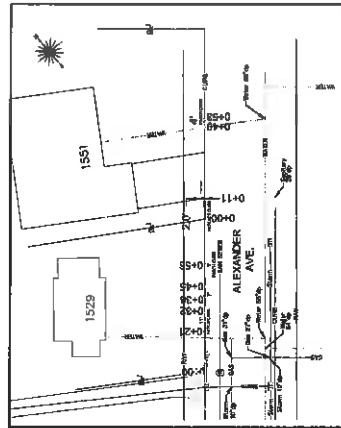
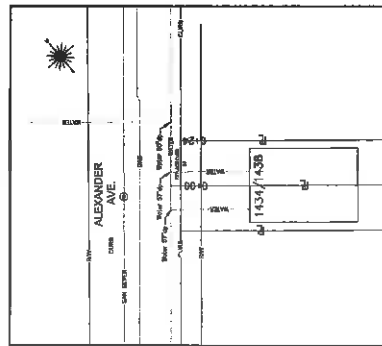
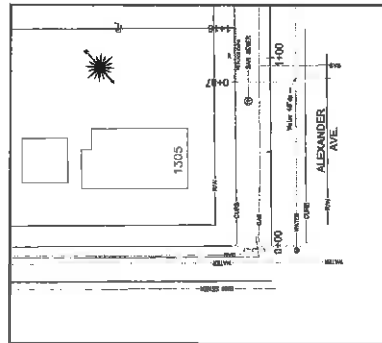
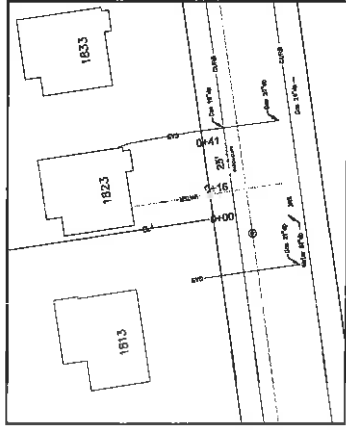
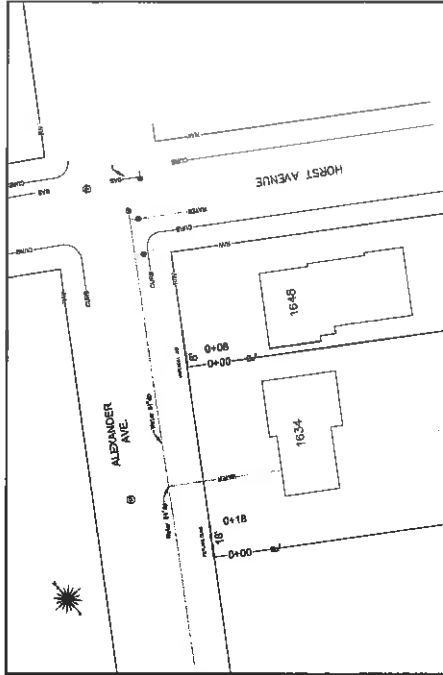
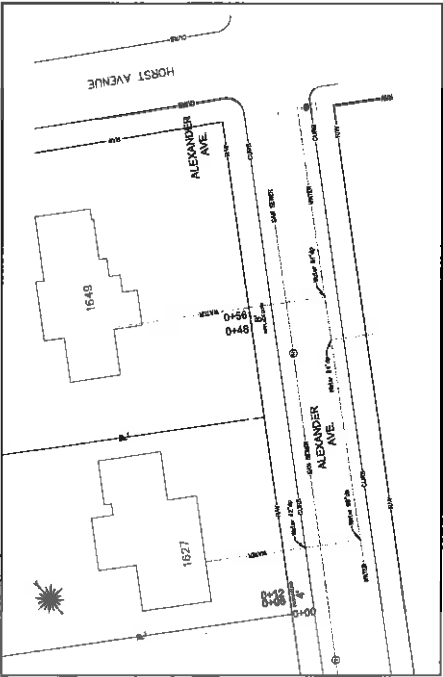
SHEET 1 OF 2

BOROUGH		DATE	
1			
2			
3			
4			
5			
6			
7			

BOROUGH OF CHAMBERSBURG
 100 S. Second Street
 Chambersburg, Penn.

FOR
PARK AVENUE
MIDDLE STREET
CURB RECONSTRUCTION PLAN

Drawn	172	Scale	1"=40'
Checked	BMF	Date	MARCH 2019
Approved		Project No.	E-5395



SHEET 2 OF 2

BOROUGH OF CHAMBERSBURG 100 S. Second Street Chambersburg, Penn.	
CURB RECONSTRUCTION PLAN FOR ALEXANDER AVENUE NORLAND AVENUE TO ROLAND AVENUE	
DATE	MARCH 1978
DRAWN BY	W.F.
CHECKED BY	W.F.
PROJECT NO.	E-395